

Swindon Town Football Club



Official Programme 5np 1/-



Swindon Town v. Watford

First-hand

Lively

Reports

Complete

Comprehensive

Coverage

Close-up Action

Shots

Every Game

At home or away

The Evening Advertiser
has it covered

McILROYS

**FULLY LICENSED
RESTAURANT**

**FOR THE BEST-VALUE LUNCH IN TOWN
OPEN ALL DAY SATURDAY**

MORNING COFFEE
LUNCHEON
AFTERNOON TEA
SILVER-GRILL SERVICE

Private room for meetings, private luncheons and dinners, celebrations

McILROYS · REGENT STREET · SWINDON 5294

Swindon Town Football Company Limited

Registered Office County Ground, Swindon

President W J Castle

Vice-President J Davies

Directors

Chairman H E Lane

Vice-Chairman R Fricker

F L Collings A W Done M Earle C J Green

F Piyer H Williams K H Wilmer and Dr J Nicholas

General Manager R A Morse

Secretary R J Jefferies

Team Manager F Ford

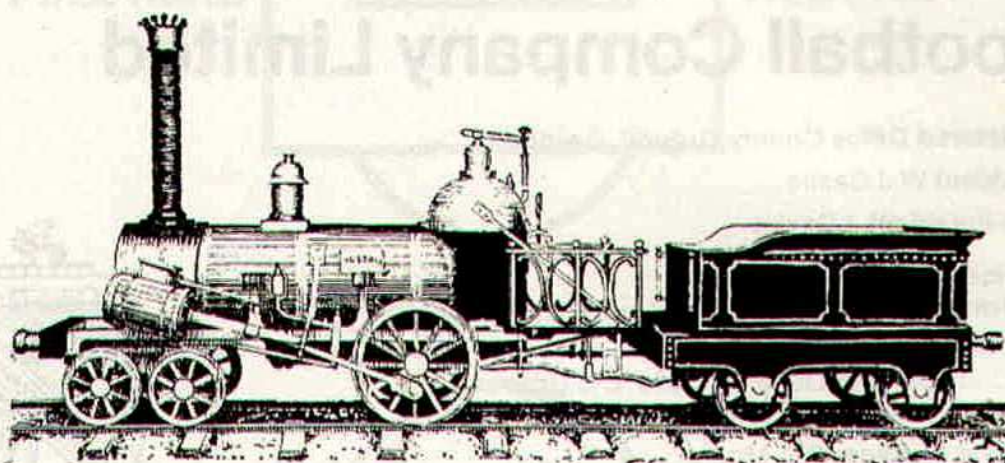


Tuesday, 1st September, 1970 – Division II

Swindon Town v. Watford

Kick-off 7.30 p.m.

Swindon Town	OFFICIALS	Watford
1 Downsborough	REFEREE	1 Walker
2 Thomas	Mr W J Gow	2 Welbourne
3 Trollope	Swansea	3 Williams
4 Butler		4 Garbett
5 Burrows		5 Lees
6 Harland		6 Eddy
7 Smith		7 Scullion
8 Smart		8 Wigg
9 Horsfield	LINESMEN	9 Sinclair
10 Noble	Red Flag:	10 Walley
11 Rogers	Mr D H Cross	11 Woods
12	Solihull	12
Colours:	Yellow Flag:	Colours:
Red and White	Mr N A Lloyd	Yellow and Black
	Warndon	



MADE IN 1843!

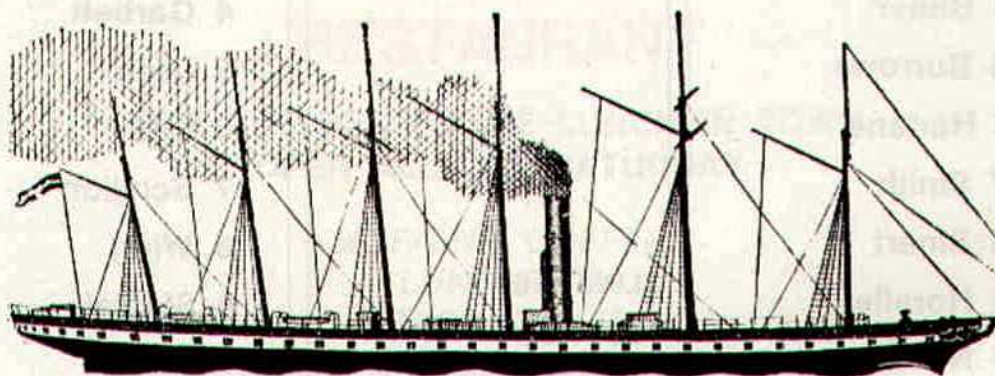
the year that ARKELL'S BREWERY and Swindon's
G.W.R. Works were founded.

ARKELLS

THE LOCAL BREW!

Time honoured by 127 years.

*GOOD HONEST BEER
IN
DELIGHTFUL LICENSED HOUSES*



"S.S. GREAT BRITAIN"

built at Bristol in 1843. Designed by the younger Brunel, she was
the first large vessel to be built of iron and the first screw
steamship to cross the Atlantic. Her speed was about 12 knots.

news & views

We have a very long association with tonight's visitors dating back to our Southern League days prior to World War I. Watford began life very early, round about 1860, and were originally nicknamed "The Brewers". They were first named Hertfordshire Rangers. Amalgamation with another local team, Watford Rovers, in 1891 produced Watford Football Club, and this club gained acceptance to the Southern League. A few years later contravention of regulations caused their exit, but four years afterwards, thanks to the energy and enthusiasm of Watford Urban Council, reinstatement was achieved, and like ourselves Watford became founder members of the new League Division 3 in 1920. All went well until 1958, when the two Third Divisions were reorganised into Division 3 and Division 4. Watford finished in 16th position in Division 3 (South), and so became members of Division 4. Two seasons later they gained promotion to Division 3 (back where they belonged). As supporters know in season 1968-69 Watford gained promotion to Division 2 along with Swindon, both clubs being level on points but Watford having the superior goal average.

Last season Watford had a very bad spell in League games, having to fight very hard to be sure of remaining in Division 2. Swindon drew 0—0 at Watford on the 15th November, 1969 but the return game played on Saturday, 28th March, 1970, was a very desperate affair. Both sides were rather tense, but for totally different reasons — Watford anxious to avoid relegation, and Swindon with a chance of promotion.

The result was a one goal to nil victory for Swindon. The only goal scored was one of the finest seen on the County Ground for many seasons, and one which supporters will remember for a long time.

John Trollope made one of his now familiar runs down the left wing, called for the ball, and received a long pass from Owen Dawson well inside his own half. John sped right past the visitors' defence and scored with a fine shot. A grand goal.

Swindon Town: Downsborough; Thomas, Trollope; Butler, Dawson, Harland; Smith, Smart, Horsfield, Noble, Rogers. Sub. Jones.

Watford: Walker; Welbourne, Williams; Eddy, Lees, Walley; Scullion, Lugg, Franks, Endean, Packer. Owen substituted for Franks in the sixty-sixth minute.

Referee: Mr. V. James (York).

Attendance: 22,597.

Receipts: £5,071 16s. 0d.

Despite their poor League record, Watford had a wonderful run in the F.A. Cup competition, defeating Division 1 clubs Stoke City and Liverpool. They were finally defeated in the semi-final by Chelsea on Tottenham's ground. Our Reserve team is playing splendid football. Several of our younger players have found their form, which augurs extremely well for the future. They lost most unfortunately at Crystal Palace 2—3, then won 2—1 at Norwich, and followed this by a resounding win at home 3—0 against Bournemouth. The team is composed of a number of experienced players plus six younger ones who respond well to the promptings of the older players. We look forward to seeing some most entertaining Reserve games this season.

Finally, we meet Watford again a week tonight in the 2nd Round of the League Cup. Both games are vitally important.

THE GREAT WESTERN HOTEL

(OPPOSITE SWINDON RAILWAY STATION)

The business man's hotel with a top class
steak bar too!

Specialists in
LUNCHEONS and DINNERS
WEDDING PARTIES and RECEPTIONS
good food — quick service

J. ARKELL and SONS LIMITED Telephone SWINDON 22047

Mills and Merricks Limited

16-17 Bridge Street Swindon

Telephone 5365/6

"HOME OR AWAY"

our function is to ensure that your home is
tastefully and economically furnished

SWINDON'S COMPLETE HOUSE FURNISHERS

New City Office Supplies Limited

Office and Stationery Suppliers
to Industry and Commerce

6 Commercial Road Swindon

Telephone Swindon (STD Code 0793) 4605



CLARK BROS. (Swindon) LTD

Building and Civil Engineering Contractors

CONSULT US FOR
BUILDING AND CIVIL ENGINEERING
CONSTRUCTION IN ALL ITS PHASES

STRATTON ROAD

SWINDON

Telephone Swindon 27261

Personality Spot ...

John Trollope



Born Swindon. A local player who joined the Swindon Ground Staff from school. He was selected for the first team at the beginning of the 1960/61 season when he was just 16 years old, and was ever present during that season. Together with his partner that year, who was also 16, they were the youngest full-backs ever to appear as a pair in League football. A regular member of the promotion winning side of season 1968/69, he also played in the Football League Cup Final winning team of season 1968/69, the League Cup Winners Cup winning team of 1969 and the Anglo-Italian Inter-Club Competition winning team season 1969/70. John's wife's name is Maureen, and they have a daughter, Sara, aged 14 months. Height: 5ft 10in. Weight: 11st 13lb. Hobbies: Golf and cricket. Consecutive appearances: 368.

G. A. Streetly

Tobacconist and Confectioner

**10 BOURNE ROAD
MOREDON SWINDON
Telephone 4956**

C. Goodenough and Sons

Removal and Storage Contractors
any distance

**25 Cricklade Street Swindon
Telephone 4555 and 3855**

CECIL GREEN

Artistic Decorations in all its branches

**12 Armstrong Street
Swindon Wilts
Telephone 4593**

W. J. SELWOOD

Telephone Swindon 5884

Saddlery

General Leather Goods Manufactured and
Repaired to Your Individual Requirements

**103 BROAD STREET
SWINDON WILTSHIRE**

Notton's Cafe

COUNTY ROAD

Cliff and Grace Hayward
200 yards from Ground

**Snack and Grill Service
all day**

For High Class
Central Heating, Plumbing
Painting and Decorating
Electrical Installations
and Repairs

NORTH WILTS Sanitary and Heating Co. Ltd.

**NEWPORT STREET SWINDON
Telephone 5373/4**



THE ALCOHOL FUEL

COATE GARAGE

REPAIRS - OVERHAULS - WELDING
SERVICING - REBORING - TYRES

Props. E. V. & W. H. Mattick
Marlborough Road Swindon

Leese, Ing & Co. Ltd.

Mineral Water and
Squash Manufacturers

**LANDSOWN ROAD SWINDON
Telephone 22744**

Maylott Studios

For Group and Sports Photographs
Official Photographer to
Swindon Town Football Club

**31 Faringdon Road
Telephone 22792**

Always at your service

L. Bibby

For all Types — Rags, Iron and Metal, etc.
Spot Cash Paid. Please Telephone 2101
and our van will call.

**THE PADDOCK ERMIN STREET
STRATTON ST. MARGARET**

our visitors

Watford



Mike Walker

Formerly with Reading, Shrewsbury and York City, Mike joined the Watford staff early in September 1968. He has represented Wales at Under-23 level on several occasions and was reserve goalkeeper for the Welsh team in the Home Championships last season. He only missed one first team fixture during last year and so far has made 95 first team appearances.

Bert Slater

Bert has now completed five seasons with Watford, having joined the staff from Dundee in May 1965. In that time he has made 151 first team appearances. In his career he has gained several honours, including a Division II Championship medal (Liverpool), Scottish Cup Winners medal (Falkirk), Scottish League Runners-up medal (Dundee), Scottish "B" International, and an appearance in the European Cup semi-final with Dundee.

Derek Edmonds

One of the new players signed during last close season, Derek was born in Newcastle-upon-Tyne, and spent five years with Leeds United before signing for Watford in May 1970.

Duncan Welbourne

Duncan is now in his eighth season with Watford, having joined the staff in November 1963, from Grimsby Town. Up to the end of the 1969/70 season he had made 317 first team appearances.

John Williams

Born in Tottenham, John is a product of the Juniors, having originally been signed as an apprentice. He became a professional in September 1964. John was one of the two players who made 100% appearances in 1969/70, and to date has played in 232 first team fixtures.

John Pearce

John has been with the Club several years as an amateur and became a part-time professional in July 1969.

Michael Packer

Michael joined Watford as an apprentice and became a professional in April 1968. Last season he made 16 appearances in the senior side.

Keith Eddy

Keith was born in Barrow and played for the Holker Street club before signing for Watford in July 1966. He has made 188 first team appearances and was unfortunate to miss several League games last season following an injury at Carlisle.

Bernard Lewis

This will be Bernard's fourth season at Vicarage Road, having been signed from Cardiff City in 1967. He had four seasons with the "Bluebirds" and is an Under-23 Welsh International.

Walter Lees

Formerly with Kilsyth Rangers, Walter came south in June 1968. His first team appearances were restricted but he eventually took over the No. 5 spot last season and made 35 first team appearances.

Colin Franks

Colin was an amateur with the Club before signing professional forms at the beginning of the 1969/70 season. He made 11 appearances in the League side and two in the F.A. Cup, and his winning goal against Stoke City will long be remembered.

Roy Sinclair

Roy became a Watford player in March 1969, having previously been with Liverpool and Tranmere Rovers. Dogged by injury, he only made 7 League appearances last season.

Barry Endean

For the second consecutive season Barry finished as the leading goal scorer for the Club. He joined the staff in September 1968 from Pelton Fell, and so far has made 80 first team appearances, scoring a total of 34 goals.

CARTER BROS. OF SWINDON

Car Radio
Specialists

AND NORTH WILTS RENTALS

Hi-Fi Sales
and Service

FOR THE FINEST IN TELEVISION

To purchase or for rental

Personal and courteous attention : The finest after sales service in Town
One of the few really Private Firms
Staunch supporters of the Town

THE PORK SHOP

(Swindon Bacon Curing Co. Ltd.)

Specialists in

Bacon - Pork - Cooked Ham

50 FLEET STREET SWINDON

Telephone 22122

J. WILMER

Coal Merchants

St. Margaret's Road Swindon

Telephone 22535

SOUTHERN LAUNDRY CO. LTD.

Launderers and Dry Cleaners

HAYDON STREET SWINDON

Telephone 4161

At Your Service

A. E. LUDLOW LIMITED

Wholesale Fruit and Potato Merchant

COLBOURNE STREET
SWINDON WILTSHIRE
Telephone Swindon 3583

We deliver Fresh Fruit, Vegetables
and Potatoes daily—**Wholesale Only**

BRETTS

PET and GARDEN SUPPLIES

32-33 Commercial Road
and
6 Cromwell Street Swindon

For Paints of Good Quality

H. S. Hodges & Sons

(SWINDON) LTD.

Cricklade Road Swindon
Telephone 22422

Dulux, Brolac, Valspar, Wallcharm, etc.

Borough Press Swindon Limited

Eastcott Hill Swindon telephone 4022

Printers to successful industry

our visitors *continued*

Stewart Scullion

Born in Bo'ness in Scotland, Stewart joined Watford in February 1966, having previously had League experience with Charlton Athletic. He has made 213 first team appearances and scored 28 goals, and none perhaps more important than his equaliser at Norwich which ensured Second Division football for the Club for 1970/71.

Terry Garbett

Terry became a Watford player in August 1966 when he was signed from Middlesbrough. Injury restricted his first team appearances last season to 36, and so far he has made 177 appearances in the first team, scoring 50 goals.

Stewart Lowery

Stewart became a professional with the Club in January 1970 following several games as an amateur. His previous club was Bishop Auckland and he was born at Thornaby-on-Tees.

Dixie Hale

Dixie's first English League club was Swansea and he then played for Barrow and Workington prior to going to Watford in July 1967. He was capped on several occasions for the League of Ireland, and has made 110 first team appearances for the "Hornets".

Ray Lugg

A newcomer to the Club last season, Ray came south from Middlesbrough in November and made 27 first team appearances and scored 5 goals.

Tom Walley

Born in Caernarvon, Tom signed first of all for Arsenal and transferred to Watford in March 1967. Last season he made 48 first team appearances, and to date has worn the first XI shirt on 163 occasions. He has represented his country as skipper of the Welsh Under-23 side, and with Mike Walker was one of the reserves for the Home Championships last season.

Bill Jennings

Bill has been with the Club for some time as an amateur but some very impressive Reserve team appearances led to him signing professional forms in April 1970. He was chosen on several occasions for the England Amateur Youth Team during last season.

John Farley

John comes from Stockton, and formerly played for that club before being persuaded to sign professional forms in July 1969. He made 22 appearances in the Reserve side last year and will soon surely be knocking on the first team door.

Ron Wigg

Ron was signed from Ipswich at the beginning of June 1970 for a record fee for the Club, and it is hoped that he will provide the additional punch in the attack which was missing last season.

Charlie Woods

Born at Whitehaven in Cumberland, Charlie was developed by Newcastle United in junior football before making his League debut appearance with them in the 1960/61 season. He went to Bournemouth in November 1962 and had spells with Crystal Palace and Ipswich before signing for Watford in June 1970.

Soccer Who's Who Football Fans' Guide

Answers all the questions football fans want to know. 92 club directory gives advance booking details, how to get there instructions, where to park details, ground facilities and entertainment, and potted history of every club. Obtainable from all newsagents, bookshops and club shops or 8/6 post free from Press Office, Football League, St. Annes, Lancs.

Fixture list 1970/71

DIVISION II

August

15	Hull City	(H) 1—1
19	League Cup (1)
22	Sheffield United	(A) 1—2
29	Sunderland	(H)

September

1	Watford	(H)
5	Blackburn Rovers	(A)
8	League Cup (2) Watford	(H)
12	Portsmouth	(H)
19	Carlisle United	(A)
26	Luton Town	(H)
29	Millwall	(H)

October

3	Charlton Athletic	(A)
7	League Cup (3)
10	Queen's Park Rangers	(H)
16	Hull City	(A)
21	Norwich City	(A)
24	Middlesbrough	(H)
28	League Cup (4)
31	Birmingham City	(A)

November

7	Bristol City	(H)
14	Leicester City	(A)
18	League Cup (5)
21	Oxford United (1)	(A)
28	Sheffield Wednesday	(H)

December

5	Bolton Wanderers	(A)
9	League Cup Semi-Final
12	Orient (2)	(H)
16	League Cup Semi-Final
19	Sheffield United	(H)
26	Cardiff City	(A)

1971

January

2	F.A. Cup (3)
9	Millwall	(A)
16	Norwich City	(H)
23	F.A. Cup (4)
30	Sheffield Wednesday	(A)

February

6	Bolton Wanderers	(H)
13	Orient (5)	(A)
20	Oxford United	(H)
27	Birmingham City	(H)
	(League Cup Final)

March

6	Middlesbrough (6)	(A)
13	Leicester City	(H)
20	Bristol City	(A)
27	Blackburn Rovers (S.F.)	(H)

April

3	Sunderland	(A)
9
10	Cardiff City	(H)
12	Portsmouth	(A)
13	Charlton Athletic	(H)
17	Queen's Park Rangers	(A)
24	Carlisle United	(H)
28	Watford	(A)

May

1	Luton Town	(A)
8	F.A. Cup Final

FOOTBALL COMBINATION

August

15	Crystal Palace	(A) 2—3
19	Norwich City	(A) 2—1
22	Bournemouth & B.A.	(H) 3—0
25	Chelsea	(H) 3—0
29	Ipswich Town	(A)

September

5	Oxford United	(H)
12	Queen's Park Rangers	(A)
15	Cardiff City	(H)
19	Bristol Rovers	(H)
26	West Ham United	(A)

October

3	Crystal Palace	(H)
6	Swansea City	(H)
10	Arsenal	(A)
14	Fulham	(A)
17	Queen's Park Rangers	(H)
24	Gillingham	(A)
31	Birmingham City	(H)

November

7	Bristol City	(A)
14	Leicester City	(H)
21	Fulham	(H)
28	Tottenham Hotspur	(A)

December

5	Plymouth Argyle	(H)
19	Bournemouth & B.A.	(A)
26	Reading	(H)

1971

January

9	Norwich City	(H)
16	Chelsea	(A)
23	Southampton	(A)
30	Tottenham Hotspur	(H)

February

6	Plymouth Argyle	(A)
13	Southampton	(H)
24	Cardiff City	(A)
27	Birmingham City	(A)

March

6	Gillingham	(H)
13	Leicester City	(A)
20	Bristol City	(H)
31	Oxford United	(A)

April

3	Ipswich Town	(H)
7	Reading	(A)
17	Arsenal	(H)
20	Swansea City	(A)
24	Bristol Rovers	(A)

May

1	West Ham United	(H)
---	-----------------	-----------

Copyright of The Football League Ltd. and not to be reproduced without permission.

League table division 2

(up to and including Wednesday, 26th August, 1970)

	P	W	D	L	Goals		Pts.
					F	A	
Cardiff City ...	3	2	1	0	5	3	5
Birmingham City	2	2	0	0	5	1	4
Bolton Wanderers	3	2	0	1	6	7	4
Portsmouth ...	2	1	1	0	5	1	3
Orient ...	2	1	1	0	3	1	3
Hull City ...	2	1	1	0	2	1	3
Oxford United ...	2	1	1	0	3	2	3
Bristol City ...	2	1	1	0	5	4	3
Watford ...	2	1	1	0	5	4	3
Sheffield Wed. ...	4	1	1	2	4	5	3
Leicester City ...	2	1	0	1	3	2	2
Middlesbrough	2	1	0	1	2	2	2
Norwich City ...	2	0	2	0	1	1	2
Sheffield Utd. ...	2	1	0	1	3	4	2
Sunderland ...	2	0	1	1	6	7	1
Millwall ...	2	0	1	1	3	4	1
Swindon Town ...	2	0	1	1	2	3	1
Blackburn Rov. ...	2	0	1	1	1	2	1
Charlton Athletic	2	0	1	1	1	2	1
Luton Town ...	2	0	1	1	2	4	1
Q.P.R. ...	2	0	0	2	2	5	0
Carlisle United ...	2	0	0	2	1	5	0

Football Combination

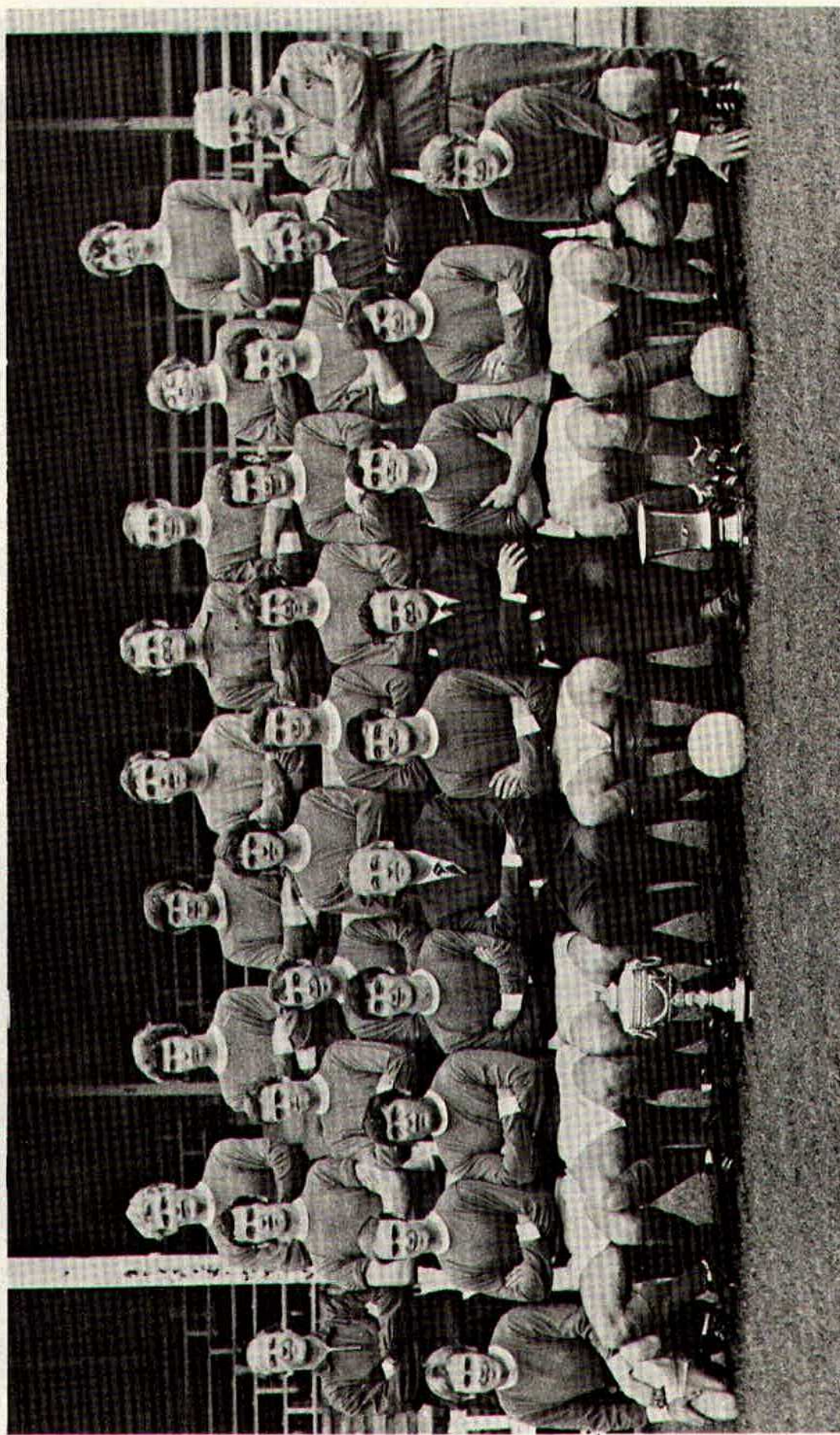
(up to and including Tuesday, 25th August, 1970)

	P	W	D	L	Goals		Pts.
					F	A	
Swindon Town ...	4	3	0	1	10	4	6
Cardiff City ...	3	2	1	0	5	1	5
Ipswich Town ...	3	2	1	0	6	3	5
Crystal Palace ...	3	2	1	0	5	3	5
Bristol City ...	3	2	1	0	7	4	5
Birmingham City	2	2	0	0	5	2	4
West Ham United	3	2	0	1	5	2	4
Swansea City ...	3	1	2	0	6	3	4
Fulham ...	3	1	2	0	7	5	4
Queen's Park R.	4	2	0	2	9	9	4
Tottenham Hotspur	3	1	1	1	2	1	3
Arsenal ...	3	1	1	1	5	5	3
Norwich City ...	3	1	1	1	4	4	3
Southampton ...	3	1	1	1	2	3	3
Chelsea ...	4	1	1	2	1	6	3
Bristol Rovers ...	3	1	0	2	6	9	2
Leicester City ...	2	1	0	1	1	1	2
Oxford United ...	3	0	1	2	3	5	1
Gillingham ...	3	0	0	3	3	8	0
Bournemouth & B.A.	2	0	0	2	1	5	0
Plymouth Argyle	2	0	0	2	1	6	0
Reading ...	4	0	0	4	1	10	0



This was one cross that Peter Noble was unable to convert, being just beaten to the ball by McKechnie, the Hull City goalkeeper.

12 Officials and Playing Staff of Swindon Town F.C.



the man in the middle

William Gow

Started refereeing in 1953 with the Welsh League and he was appointed to the Football League line in 1961 from the Football Combination. He became a Football League referee in 1963. Some of the more important matches he has officiated in are the 1967 Welsh Cup Final; 1967 and 1968 the Under-23 International between England and Scotland; 1968 U.S.S.R. v. Czechoslovakia; 1967 Denmark v. Hungary in the European

Nations Cup and in 1969 Newcastle United v. Rangers in the Semi-Final of the Inter Cities Fairs Cup. He has also officiated in various European Cup and European Cup Winners Cup matches.

Mr. Gow, a schoolmaster, is married with two daughters aged 10 and six years. He is interested in painting and gardening.

**Your team
for Planned Savings**



SAVINGS ACCOUNTS

**GOVERNMENT
STOCKS**

**SAVE AS YOU EARN
SCHEME**

**T.S.B.
UNIT TRUST**

**CHEQUE
ACCOUNTS**

**LIFE ASSURANCE
LINKED SAVINGS**

**CASH
DISPENSER**

**CHEQUE
CARDS**

SERVICE

**FOREIGN
CURRENCY**

**STANDING
ORDERS**

Ask for details at your local T.S.B. Office

TRUSTEE SAVINGS BANK

93 Commercial Road, Swindon

Telephone 23949

DON ROGERS SPORTS
29 FARINGDON ROAD SWINDON

Telephone 27378

Main suppliers to Swindon Town Football Club

Stockists of

All leading makes of Football Boots and Clothing
Table Tennis, Badminton, Rugby and Hockey equipment

IN FACT THE COMPLETE SPORTS OUTFITTER

RIMES of SWINDON

POPULAR EXCURSION TO

			Fare	
			adult	child
Saturday, 5th Sept.	BLACKBURN ROV.	Dept. 08.00 hrs.	32/-	22/-
SERVICE DIRECT TO THE GROUND				
ALL SEATS NUMBERED AND RESERVED				

Book now at

102 Commercial Rd., Swindon **46 Cricklade St., Cirencester**
Telephone 27113 Telephone 3479

or with any of Rimes Booking Agents

Dobell Shearman & Co. Ltd.
HIGH STREET, OLD TOWN, SWINDON

Telephone 4961

FANCY and COMMERCIAL STATIONERS
TYPEWRITERS and OFFICE EQUIPMENT

Greetings Cards for all Occasions
from Leading Art Publishers



W. J. CASTLE

Office and Bakery

4 and 5 MARKET STREET
SWINDON

Telephone 22017

Specialists—

BIRTHDAY CAKES - WEDDING CAKES
DAIRY CREAM - PASTRIES
BUNS - ROLLS - SPONGES



Supporters club notes

In terms of money a sum of £18,000 each year for 42 years has to be found to repay the loan on the new stand. Some of this will come from the increased accommodation. The Supporters' Club must do its share towards the balance.

Several ways are already in being. The Supporters' Club Weekly Competition is the backbone of the fund raising. A reasonable profit is made each year from the selling of souvenirs – badges, pennants, scarves, Supporters' Club Handbook and so forth. There is quite a varied selection, and you will all find something in the kiosk attached to the Social Club. The Weekly Competition is promoted by Phil Hart, who has been doing this highly important job for some years. But to be successful more agents are wanted, especially in the country areas where, I am sure, there are many supporters who wouldn't mind helping. The commission of 2/6 in the £1 also helps towards the expense of coming to Swindon for the matches. Last year, for instance, our top agent earned over £100 in the season. Enough to cover a Mediterranean holiday for two. So contact Mr. Phil Hart, 65 Pavenhill, Purton, telephone Purton 601. Even better, call around at the Supporters' Club H.Q.'s before or after every Saturday match (including Reserve games) where you will find Phil in attendance, ready and eager to enrol as many as possible.

Don't forget that next season Swindon Town will again be in the Anglo-Italian Inter-League Cup Competition. The Supporters' Club are aiming to arrange a short holiday in Italy (8-9 days) to cover the matches in Italy. We hope that

as many as possible of those who made our day charter flights last season will come for the longer period. Fill in the coupon below, and get yourself provisionally booked.

Proposed SUPPORTERS' CLUB ITALY TOUR 1971

**for the away games in the
Anglo-Italian Inter-League
Cup Competition.**

A tour of about 8 days is expected.

**This will include the two away
matches, with the periods before
and between matches at a suitable
seaside resort.**

To: The Hon. Gen. Secretary,
Swindon Town Football
Supporters' Club, Social Club,
County Ground, Swindon.

Please allocate me a provisional
place in the above Italian Tour, and
advise me of all details when
available.

Name (Mr./Mrs./Miss):

(Block capitals please)

.....

Address:

.....

.....

.....

Tel. number (if any):

.....

If more than one wishes to be
recorded, please attach the above
information on an additional sheet
of paper.

**Note: Please enclose a stamped,
addressed envelope for the further
information, which should be
available by the end of October.**

HARRY LUNN

(Ex NOTTS COUNTY, PORTSMOUTH and SWINDON TOWN F.C.)

Fish Bar and Restaurant
27-28 COMMERCIAL ROAD SWINDON

RESTAURANT open 9 a.m. to 10 p.m. for

Snacks - Lunches - High Teas - Evening Meal

FISH BAR open Mid-day and Evenings until 11 p.m.

HULFORD MOTORS LIMITED

SELF DRIVE HIRE

Fleet of 1970/69 Fords Escorts De-Luxe
Cortinas De-Luxe Cortinas 1600 Estate
(Bench Seat Column Change) — Zephyr V4s

SHRIVENHAM ROAD

(200 yards from Football Ground)

Telephone 4934

Large Car Park Available

COWLEY BROS. (Wroughton) LTD.

BUILDERS OF MODERN ATTRACTIVE
HOUSES and BUNGALOWS

Developments at

SWINDON

WROUGHTON

BADBURY

Office

28 NEWPORT STREET
SWINDON

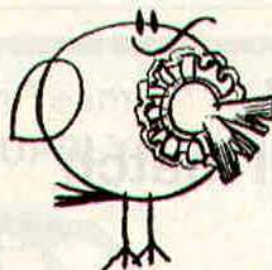
Telephone Swindon 6870

Reserved for British Rail



Inter-City

Golden Goal Competition



Tickets bearing the time in minutes and seconds will be on sale before the game – price **one shilling**
The ticket with the exact time when the FIRST GOAL is scored will win

£60

The ticket bearing the time when the LAST GOAL is scored will win

£10

The official announcer will be the timekeeper and he will announce the official time of both goals. Should only one goal be scored the winning ticket holder will receive £70. In the event of no goals tickets bearing no score will win £10

A further prize of **£10** will also be given for the ticket bearing the number corresponding to the official attendance at the match
Be sure to get your ticket –
Watch for the
GOLDEN GOAL GIRLS!

Forthcoming matches

SATURDAY, 5th SEPTEMBER, 1970

Football Combination – Kick-off 3 p.m.

Swindon Town v. Oxford United

TUESDAY, 8th SEPTEMBER, 1970

Football League Cup Competition – Kick-off 7.30 p.m.

Swindon Town v. Watford

SATURDAY, 12th SEPTEMBER, 1970

Division II – Kick-off 3 p.m.

Swindon Town v. Portsmouth

Charity football match

THE ENTERTAINERS XI v. MAURICE OWEN'S XI

to be held at the

**Swindon Town F.C. Training Ground
Shrivenham Road, Swindon**

on Sunday, 6th September, kick-off 3.30 p.m.

Admission by programme 2/- (on sale in advance from Bon Marché,
The Parade, Swindon)

Proceeds will be donated towards the cost of an ambulance
for the Geriatric Day Patients of the Geriatric Day Wing at St. Margarets
Hospital, Stratton St. Margaret

Anglo-Italian Inter Club Competition

Programmes of the Final of this Competition
held in Naples

available from the Club Office

price 1/- each

Complete set of programmes comprising
those for two matches played at Swindon
together with the Final programme
price 1/6 set

F.A. Diary for Season 1970/71

available from the Football Association, 22 Lancaster Gate,
London W.2

Price 6/- each

Suppliers to the Swindon Team
MAY WE SUPPLY YOU?



EARLE

of Chippenham Limited

MAIN

FORD

DEALERS

COCKLEBURY ROAD CHIPPENHAM

Telephone 3255

H. HIBBERD LIMITED

FOR YOUR EARTH-MOVING EQUIPMENT

Plant Hire Contractors



40 NEWPORT STREET SWINDON

Telephone Swindon 6125

follow the robins . . .

to Blackburn Rovers Saturday 5th September



Leave Swindon by A345 and at junction at Stratton take the A419 to Cirencester. Leave Cirencester on the A435, and continue via Baunton and Seven Springs to **Cheltenham**. **31½ miles**

Leave Cheltenham by the Tewkesbury Road (A4019) at junction follow the A38, continue via Tewkesbury to the M50 Motorway, follow signs "Birmingham M50" and 1½ miles on join M5. Continue to end of Motorway then take the A456 following signs "North West M6" until reaching Warley then take the A4123 to **Wolverhampton**. **90¾ miles**

Leave Wolverhampton on the A449 and continue to Gailey, at roundabout take 3rd road off to join the M6 Motorway, follow signs "North West and Stafford M6". Continue on M6 until intersection "Preston A59". **179½ miles**

Take A59 and follow signs "Blackburn A59". At junction take A677 continue into Buncer Lane then Bolton Road to **Ewood Park, Blackburn**. **192 miles**

Route kindly supplied by R.A.C.

Admission Prices at Ewood Park

Riverside Stand 9/-. Riverside Stand double 12/- (Father and Son ticket). Nuttall Street Stand 12/-

Tickets for Nuttall Street Stand can be booked in advance price 12/-.

Applications to enclose s.a.e. and to be sent to: Secretary, Blackburn Rovers F.C., Ewood Park, Blackburn. Tickets can be obtained 14 days prior to match.

Football League Cup – Second Round

Swindon Town v. Watford

Tuesday, 8th September, 1970

Kick-off 7.30 p.m.

Season Ticket holders with '**A**' Issue tickets must claim their seats **not later than Thursday, 3rd September**. Tickets not claimed by this date will be available for '**B**' Issue ticket holders from **Friday, 4th September**.

AKERS GARAGE LIMITED

THE STREET MOREDON SWINDON WILTSHIRE

Telephone Swindon 3457/8

main dealer for
VAUXHALL/BEDFORD

and
**Parts and Accessories
Sales and Service**

Showrooms open
MONDAY to FRIDAY — 8 a.m. to 8 p.m.

SATURDAY — Closed 7 p.m.

SUNDAYS — 10 a.m. to 2 p.m. for Petrol and Viewing

For a home win fill in this coupon NOW!

I am interested in a home on the Nythe Estate. ☐
Greenmeadow Estate. ☐ Eldene Estate. ☐

NAME _____

ADDRESS _____

We are currently building the three Swindon developments indicated on the coupon, together with other housing projects in the counties of Somerset and Dorset.

BRADLEY ESTATES

74 VICTORIA ROAD SWINDON

Tel: 5865



spectator seating in high density polyethylene

- * Supplied to over 40 Football League clubs
- * Any colour. No maintenance
- * Industrial seats for the food, electronics and pharmaceutical industries
- * Largest supplier of spectator and industrial seating in Europe
- * Heavy, medium and light steel fabrication
- * Custom made production line equipment
- * Ancillary work for industry and the building trade

FAST EFFICIENT SERVICE BY



MARTYN LYNSHAW LTD

BOUNDARY WORKS - STRATTON ROAD - SWINDON - WILTS

Telephone: 24231